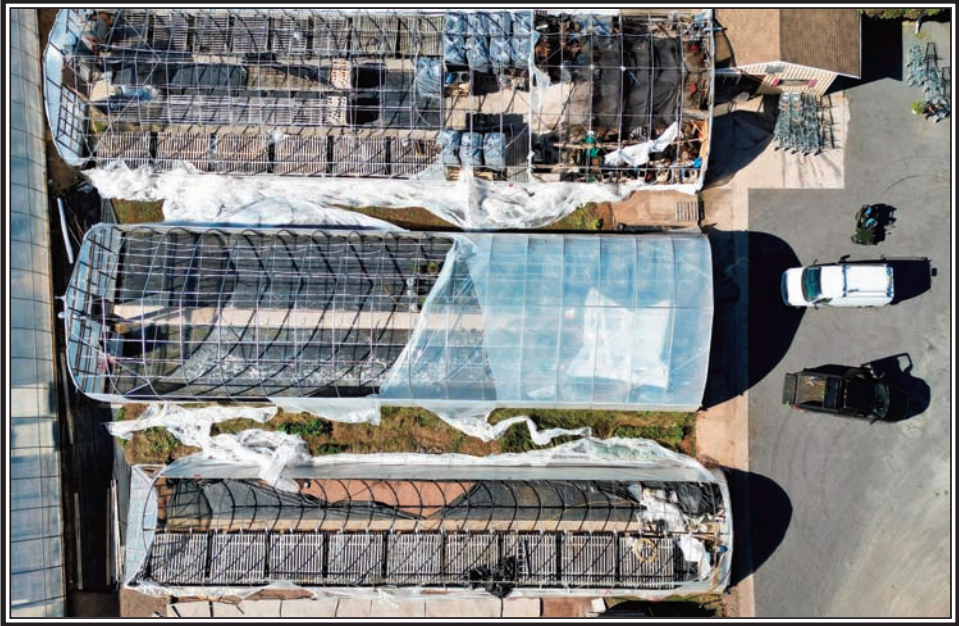


# \$30,000 Uninsurable loss at Lowland Gardens

By Michael van den Hoek  
(Earlier this month Linda Harrington, who at her home has been without telephone, internet and television services, since Fiona

until October 20 had reached out to Michael van den Hoek to get an update on the damage at Lowland Gardens, Great Village. With difficulty with communication

Michael responded with the following email, which she downloaded on October 20th when her internet service was restored. The unedited email follows)



Hi Linda! Thanks for reaching out... We've been busily working to clean up and repair the damage nonstop since essentially the day after Fiona tore through.

Apart from the incalculable loss of many, many beautiful mature trees (a number of which, Tony planted when the first arrived over 36 years ago), we're looking at an uninsurable loss of over \$30,000 from Fiona. Right now we're just taking it one day at a time, and haven't done a true thorough accounting of the costs of the damage - just repairing and rebuilding whatever needs to be done in order to face next year whole again.

We still count ourselves lucky - our residences, vehicles, equipment, and the main shop building were thankfully undamaged, and the main support arches of all but one of the greenhouses stood strong. What was damaged was essentially 5 greenhouses were

shredded of their plastic (and a 6th was later realized to be torn and weakend to the point of needing premature replacement as well). We also has a lot of accessory steel and supporting pieces that were destroyed, such as the steel polls we use to roll up the greenhouse sides - requiring the replacement of a couple thousand feet of steel piping and aluminum channel.

Greenhouses are uninsurable structures for things like wind, storm, and snow load

damage. We are aware of some tentative government relief programs that are being released for agriculture, but only time will tell at this point if we will qualify for them.

For us, the hardest losses are the trees that have reshaped the landscape and our display gardens, as well as the lost time of 4-8 weeks spent on repairs and rebuilding, which has scrapped our plans for the improvement projects we had planned around the garden centre for next year.

## The Shoreline Journal Business Brief

Dave Ritcey, MLA for Truro-Bible-Hill-Millbrook-Salmon-River has been appointed to the Treasury and Policy Board as a non-voting member in an announcement made by Premier Tim Houston on October 13th.

DOWNTOWN TRURO

SANTA CLAUS

Parade

NOV 27 FROM 4PM - 5:30PM



DOWNTOWN  
TRURO  
here.

WWW.DOWNTOWNTRURO.CA